



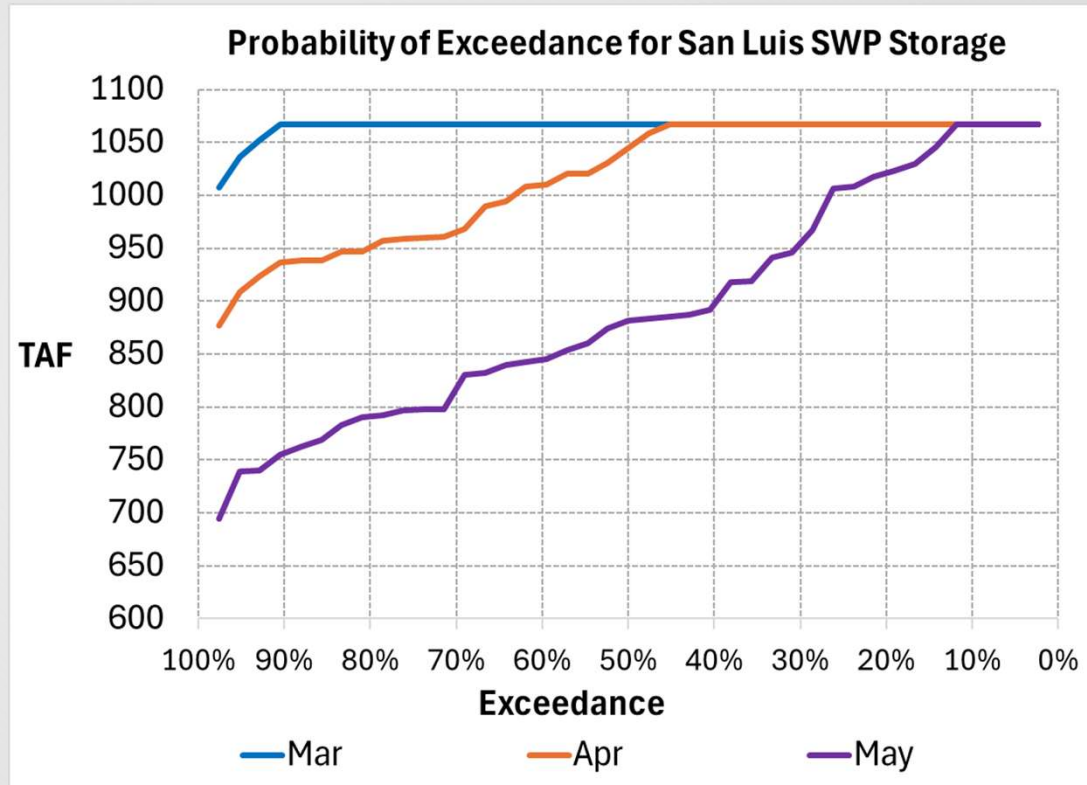
San Luis Reservoir Storage Forecast
And Article 21 Procedures
Board of Directors Meeting
March 26, 2026

San Luis Reservoir Storage Forecast

- On February 26, DWR provided an updated Water Year 2026 Position Analysis (PA)
- PA shows probability of exceedance of filling the SWP share of San Luis Reservoir and availability of South of Delta (SOD) Article 21 (A21) water between March through May

PA: San Luis SWP Storage

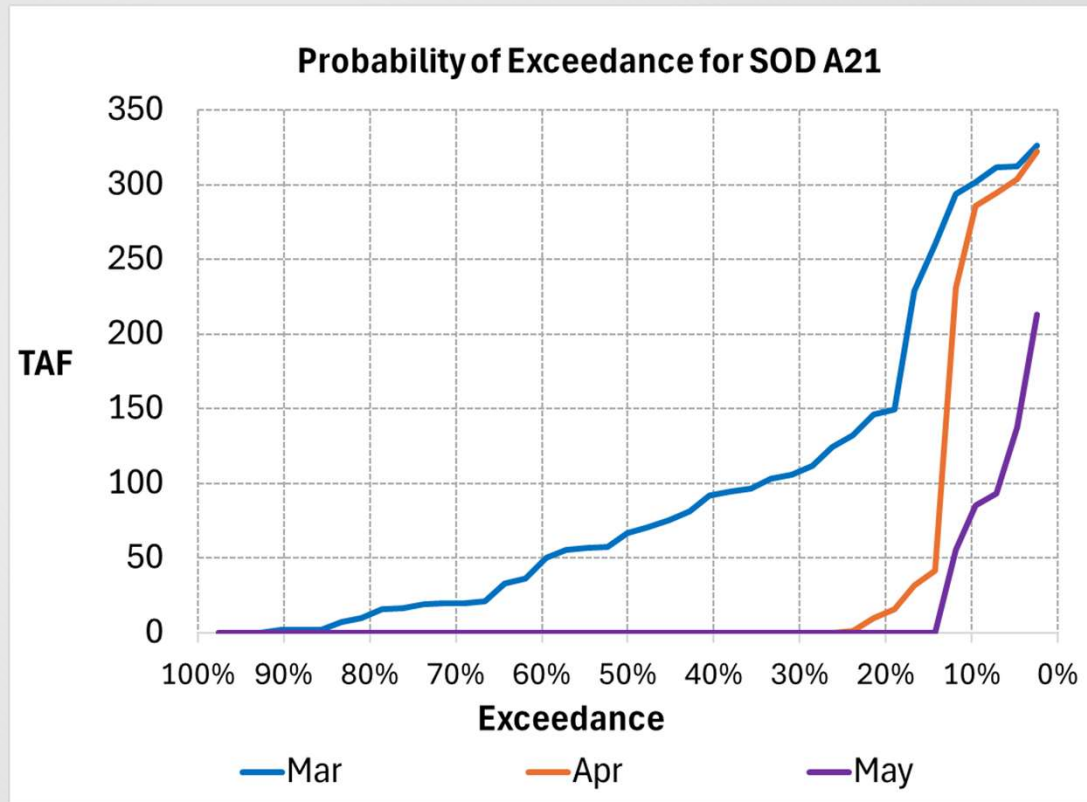
Month	Fill
Mar	91%
Apr	47%
May	12%



*Results are preliminary and subject to change

PA: SOD A21 Water

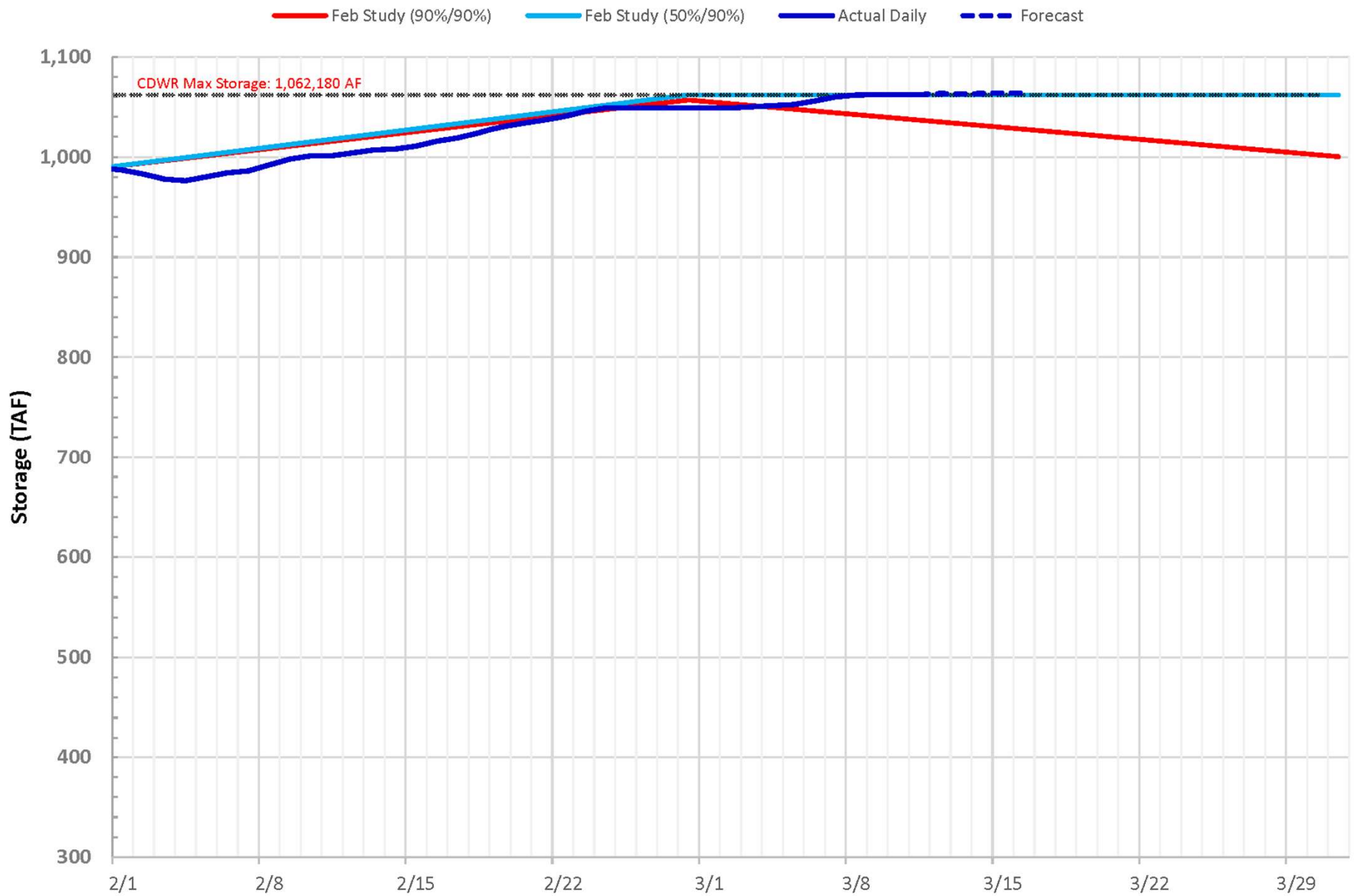
Month	Max (taf)
Mar	326
Apr	322
May	213



*Results are preliminary and subject to change



SWP Share of San Luis Storage Forecast vs Actual



Provisional – Subject to Revision

March 12, 2026

**STATE WATER PROJECT ANALYSIS OFFICE
2025 CARRYOVER STORAGE ALLOCATION
END OF JANUARY 2026**

SWP CONTRACTORS	CONTRACTED TABLE A (AF)	CUMULATIVE CARRYOVER STORED (AF)	STORAGE SPACE ALLOCATION (AF)	STORAGE BALANCE (AF)
FEATHER RIVER				
COUNTY OF BUTTE	27,500	608	5,125	4,517
PLUMAS COUNTY FC&WCD	2,700	267	503	236
CITY OF YUBA CITY	9,600	6,379	1,789	(4,590)
Subtotal				
NORTH BAY				
NAPA COUNTY FC&WCD	29,025	16,515	5,410	(11,105)
SOLANO COUNTY WA	47,756	13,559	8,901	(4,658)
Subtotal				
SOUTH BAY				
ALAMEDA COUNTY FC&WCD-ZONE 7	80,619	12,820	15,025	2,205
ALAMEDA COUNTY WD	42,000	8,197	7,828	(369)
SANTA CLARA VALLEY WD	100,000	59,260	18,638	(40,622)
Subtotal				
SAN JOAQUIN VALLEY				
OAK FLAT WATER DISTRICT	5,700	1,425	1,062	(363)
COUNTY OF KINGS	9,305	4,213	1,734	(2,479)
DUDLEY RIDGE WATER DISTRICT	41,350	5,980	7,707	1,727
EMPIRE WEST SIDE ID	3,617	1,332	674	(658)
KERN COUNTY WA	982,730	117,875	183,158	65,283
TULARE LAKE BASIN WSD	86,854	15,193	16,188	995
Subtotal				
CENTRAL COASTAL				
SAN LUIS OBISPO COUNTY FC&WCD	25,000	9,652	4,659	(4,993)
SANTA BARBARA COUNTY FC&WCD	45,486	36,251	8,478	(27,773)
Subtotal				
SOUTHERN CALIFORNIA				
ANTELOPE VALLEY-EAST KERN WA	144,844	17,286	26,995	9,709
SANTA CLARITA VALLEY WATER AGENCY	95,200	11,449	17,743	6,294
COACHELLA VALLEY WD	138,350	27,849	25,785	(2,064)
CRESTLINE-LAKE ARROWHEAD WA	5,800	3,682	1,081	(2,601)
DESERT WATER AGENCY	55,750	11,222	10,390	(832)
LITTLE ROCK CREEK ID	0	0	0	0
THE METROPOLITAN WATER DISTRICT OF	1,911,500	375,983	356,258	(19,725)
MOJAVE WATER AGENCY	89,800	10,010	16,737	6,727
PALMDALE WATER DISTRICT	21,300	2,615	3,970	1,355
SAN BERNARDINO VALLEY MWD	102,600	408	19,122	18,714
SAN GABRIEL VALLEY MWD	28,800	6,215	5,368	(847)
SAN GORGONIO PASS WA	17,300	0	3,224	3,224
VENTURA COUNTY WPD	20,000	1,035	3,728	2,693
Subtotal				
TOTAL	4,170,486	777,280	777,280	0

CCWA San Luis Reservoir Storage Estimate

Central Coast Water Authority - San Luis Reservoir Storage Estimate

A	B	C	D	E	F	G	H	I	J	K	L	M	N	O
Project Participant	Table A Amount			Water Made Available in 2026				Turnout Deliveries as of 2/28/26	56C Balance After Turnout Deliveries	Allocation of 56C Storage as of 3/12/2026 8,478	Available Un-used Storage	Allocation of Un-used Storage	56C Carryover Allocated Storage	56C Carryover Overstored
	Project Table A Amount	Drought Buffer	Total Table A	Table A Allocation 30%	Article 56C Carryover Water	Article 14B Carryover Water	TOTAL							
City of Guadalupe	550	55	605	182	63	10	255	34	29	113	84	0	29	0
City of Santa Maria	16,200	1,620	17,820	5,346	15,476	292	21,114	655	14,821	3,321	0	299	3,621	11,200
Golden State Water Co.	500	50	550	165	231	9	405	1	230	103	0	9	112	118
Vandenberg AFB	5,500	550	6,050	1,815	3,297	99	5,211	432	2,865	1,128	0	102	1,229	1,636
City of Buellton	578	58	636	191	492	11	694	0	492	119	0	11	129	363
Santa Ynez ID#1 (Solvang)	1,500	0	1,500	450	924	27	1,401	0	924	280	0	25	305	619
Santa Ynez ID#1	500	200	700	210	797	9	1,016	0	797	130	0	12	142	655
Goleta WD	4,500	2,950	7,450	2,235	7,116	81	9,432	0	7,116	1,389	0	125	1,514	5,602
Morehart Land Company	200	20	220	66	274	4	344	0	274	41	0	4	45	229
La Cumbre Mutual WC	1,000	100	1,100	330	542	18	890	0	542	205	0	18	224	318
Raytheon Systems Co.	50	5	55	17	79	1	97	0	79	10	0	1	11	68
City of Santa Barbara	3,000	300	3,300	990	3,786	54	4,830	0	3,786	615	0	55	671	3,115
Montecito WD	3,000	300	3,300	990	0	0	990	0	0	615	615	0	0	0
Carpinteria Valley WD	2,000	200	2,200	660	2,523	36	3,219	0	2,523	410	0	37	447	2,076
SUBTOTAL	39,078	6,408	45,486	13,647	35,600	651	49,898	1,122	34,478	8,478	699	699	8,478	26,000
Summary by Region														
North Santa Barbara County	25,328	2,533	27,861	8,359	21,280	457	30,096	1,122	20,158	5,193	84	458	5,567	14,591
South Santa Barbara County	13,750	3,875	17,625	5,288	14,320	194	19,802	0	14,320	3,285	615	241	2,911	11,409

Article 21 Water Procedures

- Article 21 water becomes available at the point in time when San Luis Reservoir begins to spill
- As San Luis Reservoir spills, the storage space for Article 56C carryover water is reduced each week until it reaches zero
- The volume of Article 21 water made available is the same volume of spilled Article 56C water
- Article 21 water cannot be stored within the SWP and must be taken as a delivery when it is available

Article 21 Water Procedures

- To request Article 21 water, CCWA will need a weekly forecast of requesting Participant's water demand
- CCWA will submit an aggregated Article 21 water request to DWR
- DWR will allocate Article 21 water to CCWA and other requesting State Water Contractors
- CCWA will allocate Article 21 water according to Participant requests
- Article 56C water will continue to be scheduled to Participants that do not request Article 21 water or do not respond

Article 21 Water Procedures

- DWR offering to expedite transfers of Article 56C water to avoid its loss via spill

